

Open symposium

## Antimicrobial resistance and antimicrobial stewardship: Global and local perspectives

Thursday 13 June, 14.00 – 16.30

Auditorium H113, Sentralblokk, Haukeland University Hospital

Chair: Professor **Gunnar Skov Simonsen**, NORM, University Hospital North Norway

- 14.00 – 14.40**      **How to implement an antimicrobial stewardship program in your ICU**  
**Jeroen Schouten**, Intensivist - Critical Care Physician, Dept. of Intensive Care Medicine/ Senior Researcher, IQ healthcare, Radboud University Medical Center, Nijmegen, The Netherlands
- 14.40 – 15.00**      **Sepsis and antimicrobial stewardship – synergy or conflict of interest?**  
**Hans Flaatten**, Intensivist - Critical Care Physician, Dept. of Anaesthesia and Intensive Care, Haukeland University Hospital/ Professor, Dept. of Clinical Science, University of Bergen
- 15.00 – 15.30**      **Coffe break**
- 15.30 – 15.45**      **The association between adherence to antibiotic guidelines in hospitals and patient outcomes**  
**Jannicke Slettli Wathne**, PhD-student, Norwegian Advisory Unit for Antibiotic Use in Hospitals (KAS)/Chief advisor, Western Norway Pharmaceutical Trust
- 15.45 – 16.10**      **Antimicrobial resistance from the WHO perspective**  
**Ingrid Smith**, Technical officer, Dept. for EMP, World Health Organization, Geneva
- 16.10 – 16.30**      **How antimicrobial resistance affects people in low and middle income countries**  
**Bjørn Blomberg**, ID physician, Infectious Disease Unit, Medical Dept., Haukeland University Hospital/ Ass. Professor, Dept. of Clinical Science, University of Bergen



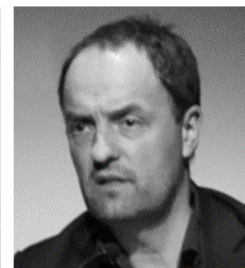
Ingrid Smith



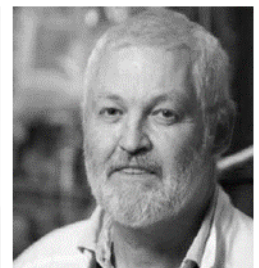
Bjørn Blomberg



Jannicke S Wathne



Jeroen Schouten



Hans Flaatten