

FIGURE 13

Questions to address when applying the quality improvement model for AMS interventions

What are you trying to achieve?	Set a goal for change in antibiotic use that is SMART (i.e. specific, measurable, achievable, relevant and time-bound).
How will you know that the change is an improvement?	Determine what quantitative measures to use to show improvement (measurements).
What changes can you make that will result in improvement?	Not all changes are an improvement. Identify the behaviour changes that will result in improvement (AMS interventions).

FIGURE 14

The quality-improvement model following the continuous improvement cycle: Plan, Do, Study, Adjust

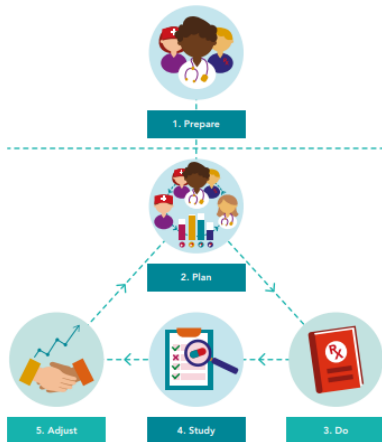


FIGURE 15

The quality-improvement model in more detail

